

Collaboration

The ability to work with others to accomplish tasks
and goals

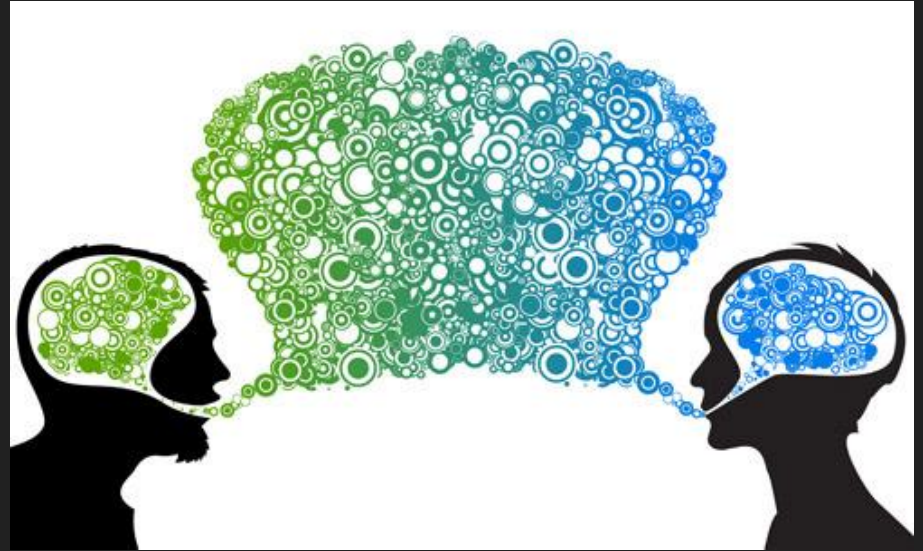
Indicators

Personal Responsibility

Communication

Respecting others

Commitment and accountability to
the group



Personal Responsibility

Preparation

Attitude

Self awareness of strengths and challenges

Active participation



Communication

Verbal

Written

Active participation by all

Each person has a role



Respecting others

Listening

Trusting

Validating others efforts and
perspective and understanding

Respect

GIVE IT



TO GET IT

Commitment and accountability to the group

Work ethic (Zest)

Prepared


Engaged

Compromise

Curiosity

Positive Attitude

Enthusiasm

An aerial view of a rowing team in orange shirts on a white boat on a body of water. The team is moving from the bottom right towards the top left. The water is dark blue with white splashes from the oars.

Is it a group of people,
or a **team**?

What makes
the difference?

